

Wayne State
College

2008-2009

Enrollment Statistics

Information Management Office

**FALL SEMESTER
Enrollment Summary**

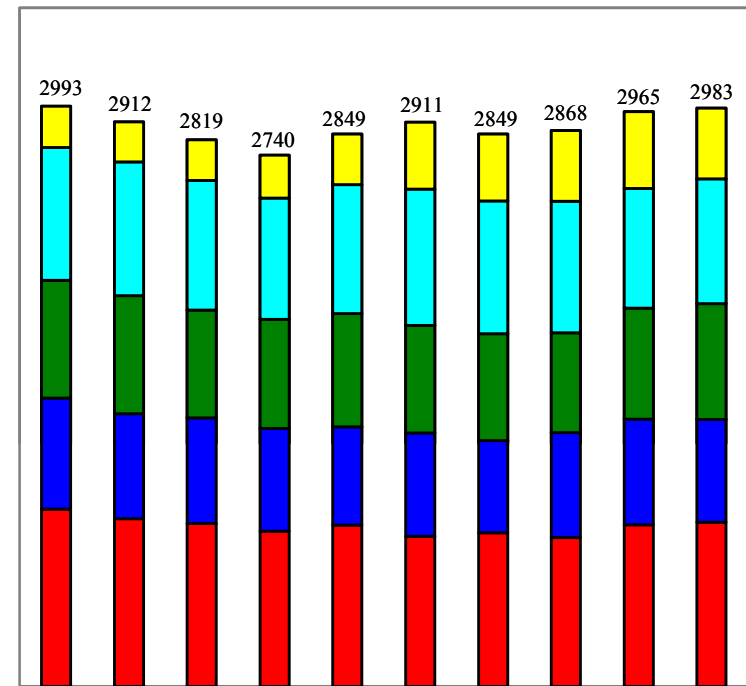
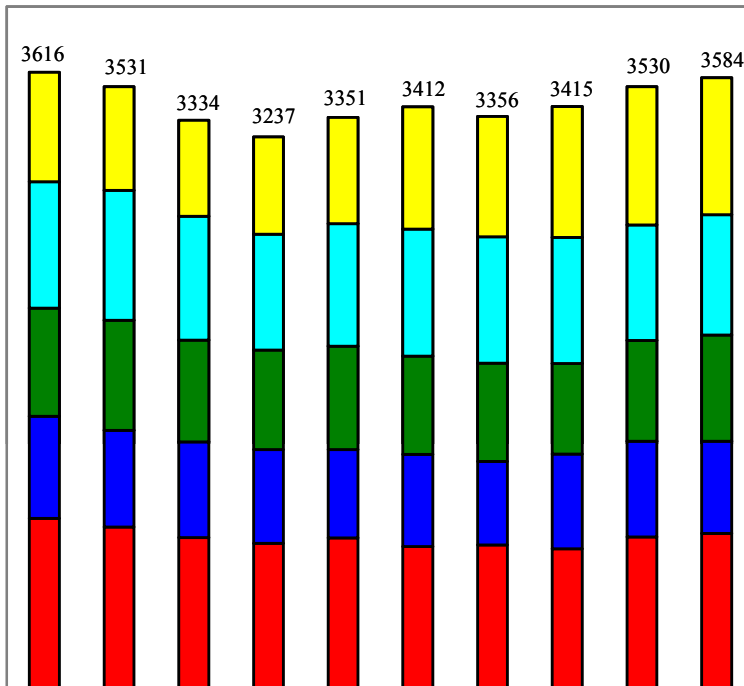
Term	H E A D C O U N T					F T E		
	Total	Undergrad	Grad	On-Campus	Off-Campus	Undergrad	Grad	Total
Fall 1999	3,616	2,974	642	3,169	447	2,780	213	2,993
Fall 2000	3,531	2,923	608	3,105	426	2,706	206	2,912
Fall 2001	3,334	2,772	562	3,003	331	2,610	209	2,819
Fall 2002	3,237	2,666	571	2,940	297	2,520	220	2,740
Fall 2003	3,351	2,728	623	2,941	410	2,588	261	2,849
Fall 2004	3,412	2,696	716	2,847	565	2,565	346	2,911
Fall 2005	3,356	2,652	704	2,839	517	2,505	344	2,849
Fall 2006	3,415	2,648	767	2,857	558	2,503	365	2,868
Fall 2007	3,530	2,721	809	2,898	632	2,568	397	2,965
Fall 2008	3,584	2,781	803	2,944	640	2,618	365	2,983

WAYNE STATE COLLEGE

Fall Enrollment Summary

Headcount

FTE

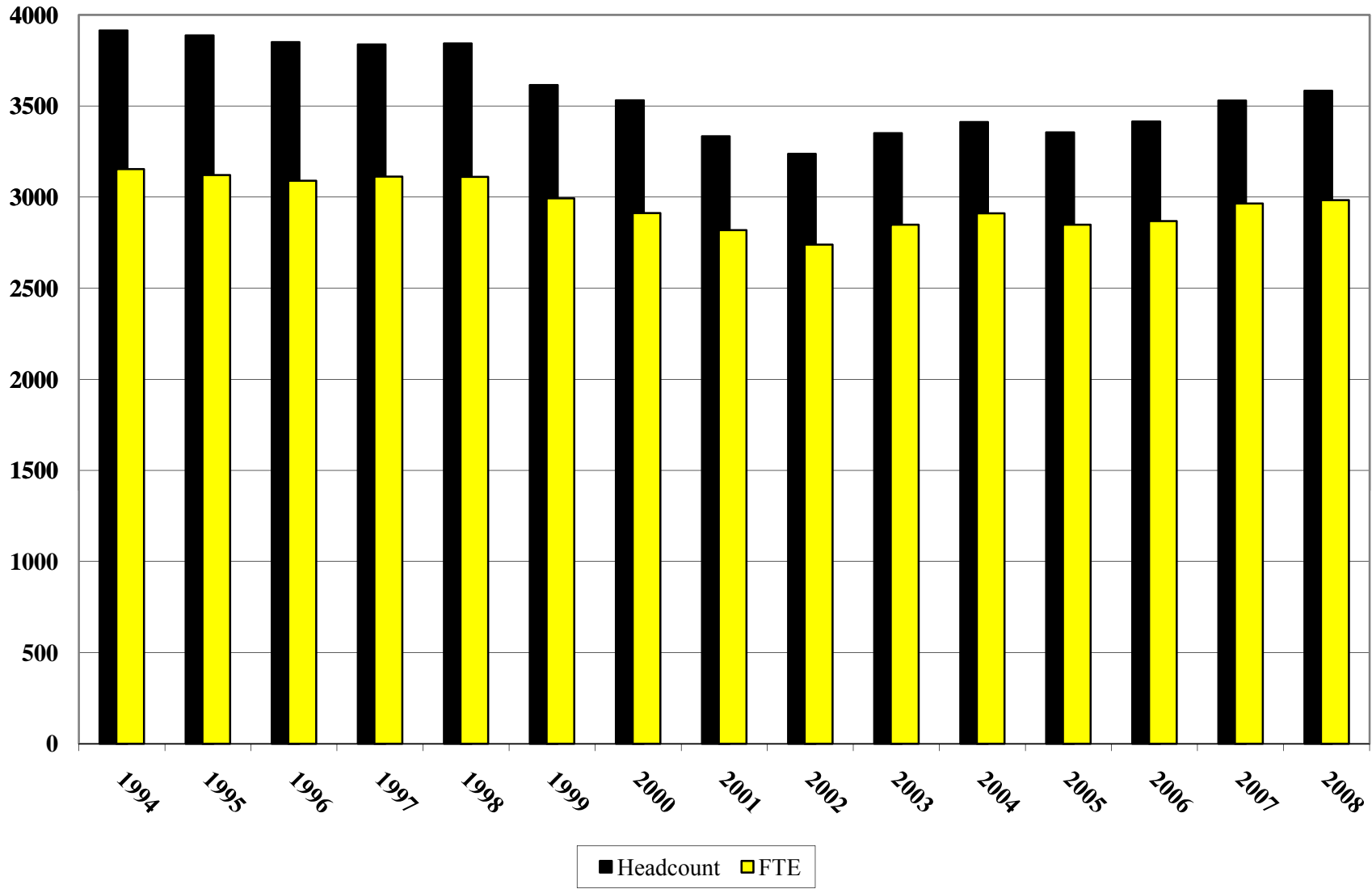


	1999	2000	2001	2002	2003	2004	2005	2006	2007	2008
Graduates	642	608	562	571	623	716	704	767	809	803
Seniors	742	761	726	679	718	744	742	740	678	706
Juniors	633	646	598	584	606	577	575	530	590	622
Sophomores	598	566	560	549	519	540	490	556	562	541
Freshmen	1001	950	888	854	885	835	845	822	891	912

	1999	2000	2001	2002	2003	2004	2005	2006	2007	2008
Graduates	213	206	209	220	261	346	344	365	397	365
Seniors	685	690	668	626	665	702	686	678	616	644
Juniors	608	610	557	564	584	556	551	515	574	597
Sophomores	572	541	544	529	506	533	476	543	544	530
Freshmen	915	865	841	801	833	774	792	767	834	847

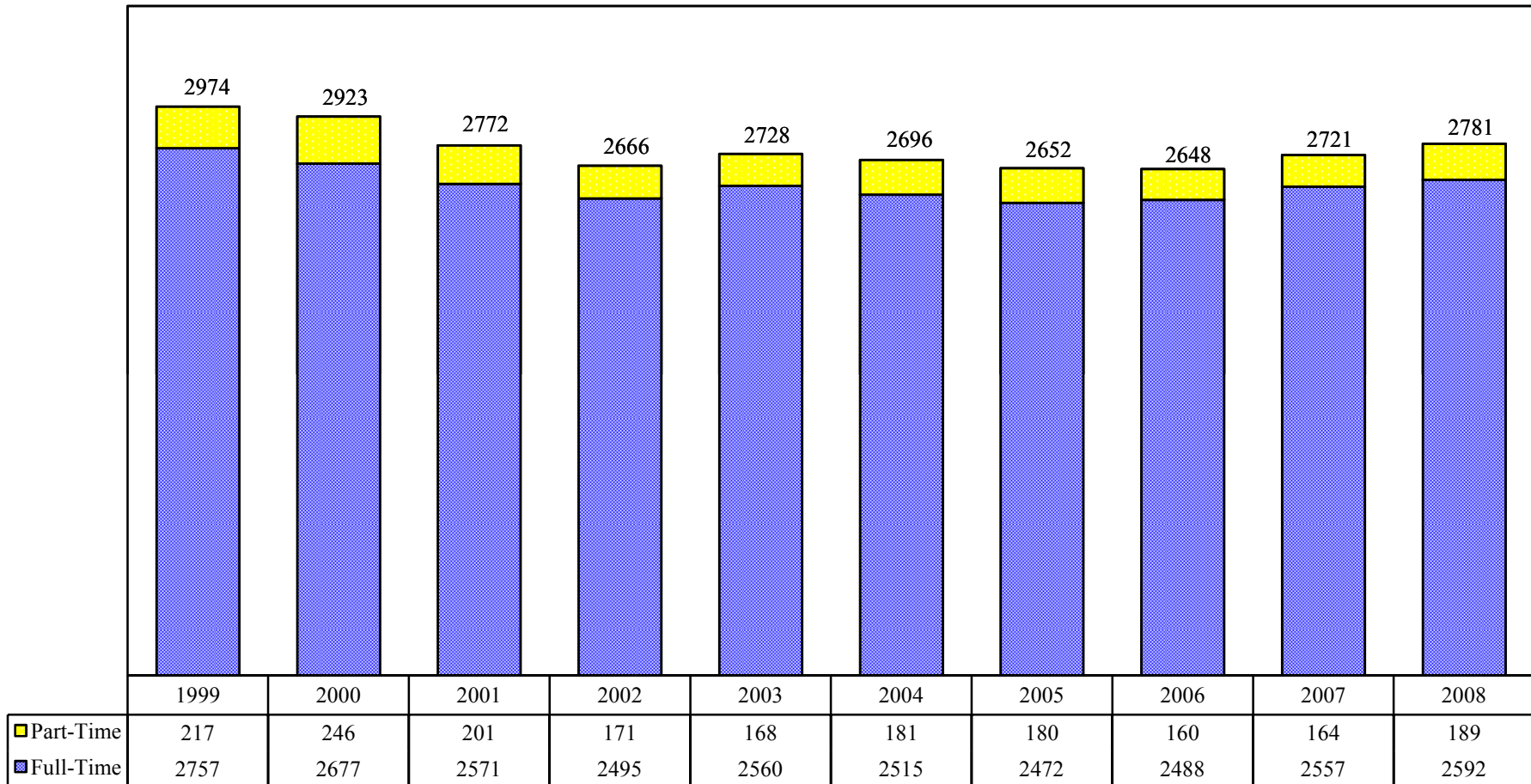
WAYNE STATE COLLEGE

1994-2008 Enrollment Growth



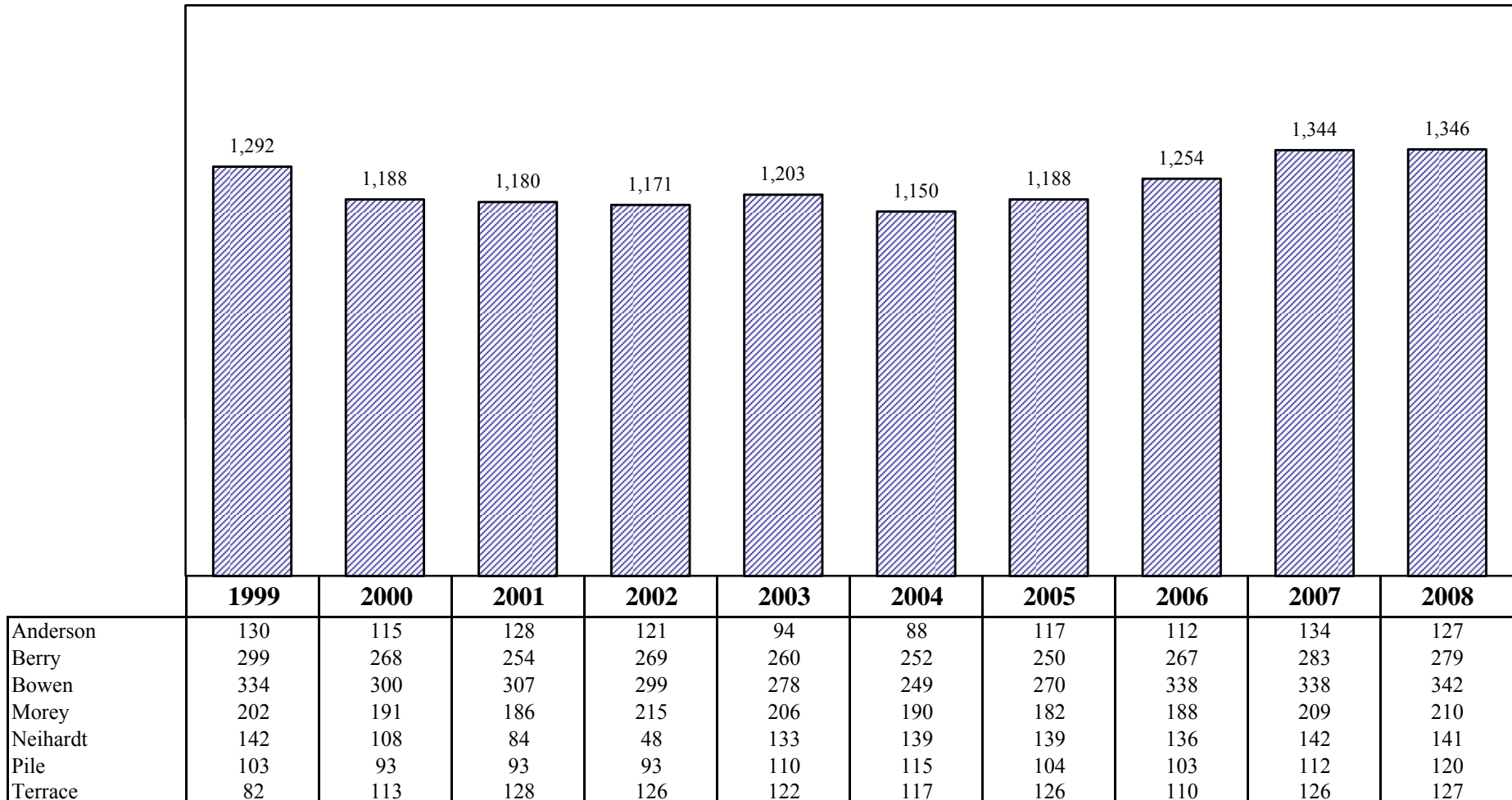
WAYNE STATE COLLEGE

Full-time and Part-time Fall Undergraduate Enrollment



WAYNE STATE COLLEGE

Dorm Occupancy



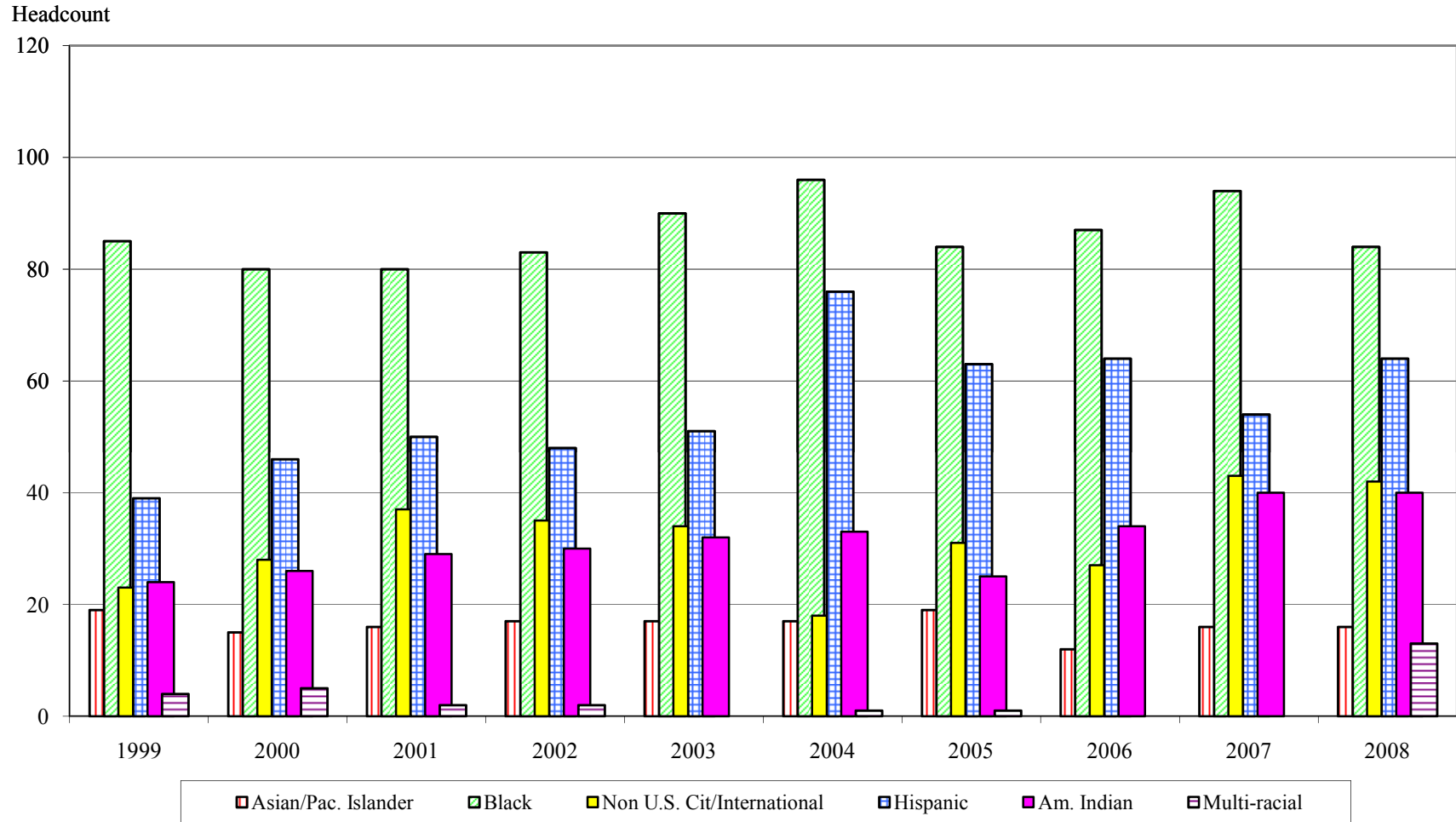
**Ethnic Background of Students
Headcount**

	Fall 1999	Fall 2000	Fall 2001	Fall 2002	Fall 2003	Fall 2004	Fall 2005	Fall 2006	Fall 2007*	Fall 2008*
U.S. Citizens										
Asian/Pacific Islander	19	15	16	17	17	17	19	12	16	16
Black	85	80	80	83	90	96	84	87	94	84
Hispanic	39	46	50	48	51	76	63	64	54	64
American Indian	24	26	29	30	32	33	25	34	40	40
Multi-racial	4	5	2	2	0	1	1	0	0	13
White	3,302	3,209	3,019	2,924	3,024	3,056	3,011	3,036	3,094	3,107
Unknown	120	122	101	98	103	115	122	155	189	218
Non U.S. Citizens/ International*	23	28	37	35	34	18	31	27	43	42
TOTAL	3,616	3,531	3,334	3,237	3,351	3,412	3,356	3,415	3,530	3,584
Minority % of Total	5%	5%	5%	6%	6%	7%	6%	6%	7%	7%

*Beginning with the Fall 2007 term, International students include any student reporting a foreign country of origin, regardless of citizenship status. These students are also included in the minority percentage.

WAYNE STATE COLLEGE

Minority Enrollment



Summary of Undergraduate Degrees (By School)

	Arts & Humanities	Business & Technology	Education & Counseling	Natural & Social Sciences	Total
2001-02*					
December 2001	20	55	31	44	150
May & August 2002	65	126	71	143	405
TOTAL	85	181	102	187	555
2002-03					
December 2002	28	51	19	48	146
May & August 2003	41	113	73	129	356
TOTAL	69	164	92	177	502
2003-04					
December 2003	17	63	35	39	154
May & August 2004	43	112	71	124	350
TOTAL	60	175	106	163	504
2004-05					
December 2004	27	57	41	49	174
May & August 2005	36	125	67	135	363
TOTAL	63	182	108	184	537
2005-06					
December 2005	21	44	34	49	148
May & August 2006	41	131	54	133	359
TOTAL	62	175	88	182	507
2006-07					
December 2006	23	57	49	42	171
May & August 2007	53	109	45	147	354
TOTAL	76	166	94	189	525
2007-08					
December 2007	24	50	36	50	160
May & August 2008	33	108	55	128	324
TOTAL	57	158	91	178	484
Total Since December 2001	472	1,201	681	1,260	3,614

* 2001-02 was the first academic year with the reorganization from Divisions to Schools.

**Summary of Undergraduate Degrees Awarded
December 2007 through August 2008**

	1st Major	2nd Major	Total
Applied Human & Sport Physiology	2	0	2
Art	6	0	6
Business	95	22	117
Chemistry	14	0	14
Computer Information Systems	11	1	12
Computer Science	6	0	6
Criminal Justice	35	5	40
Early Childhood	8	0	8
Early Childhood Education	1	15	16
Elementary Education	55	0	55
English	16	1	17
Exercise Science	12	0	12
Family & Consumer Sciences	15	1	16
Geography	2	3	5
Graphic Design	3	0	3
Health & PE	6	0	6
History	9	1	10
Human Service Counseling	23	0	23
Industrial Technology	19	3	22
Interdisciplinary Studies	3	1	4
Life Sciences	29	2	31
Mass Communication	13	0	13
Mathematics	4	0	4
Middle Level Education	7	0	7
Music	4	2	6
Natural Sciences	2	0	2
Political Science	3	2	5
Psychology	11	2	13
Social Sciences	15	0	15
Sociology	4	1	5
Spanish	2	2	4
Special Education	3	2	5
Speech Communication	11	0	11
Sport Management	30	2	32
Technology	4	0	4
Theatre	1	1	2
TOTAL	484	69	553