

Wayne State
College

2032-2033

Enrollment Statistics

Information Management Office

**FALL SEMESTER
Enrollment Summary**

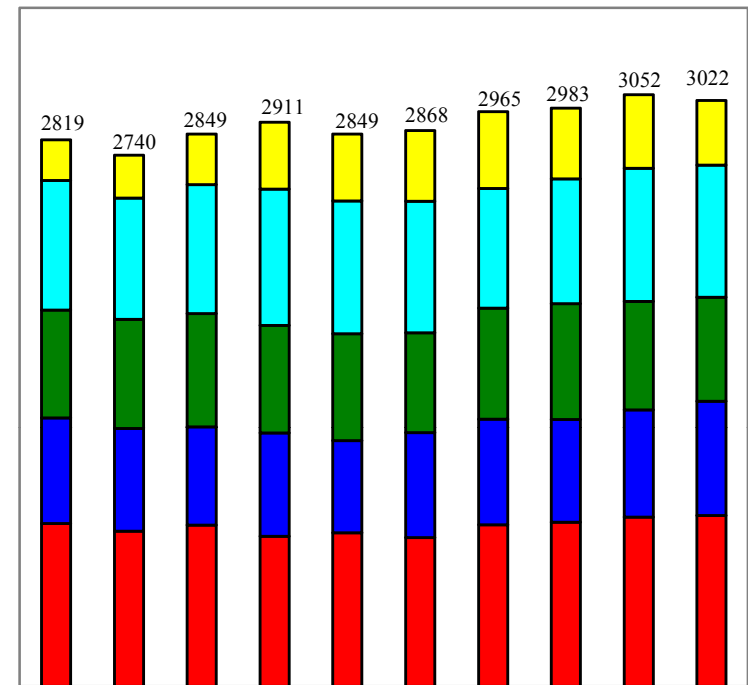
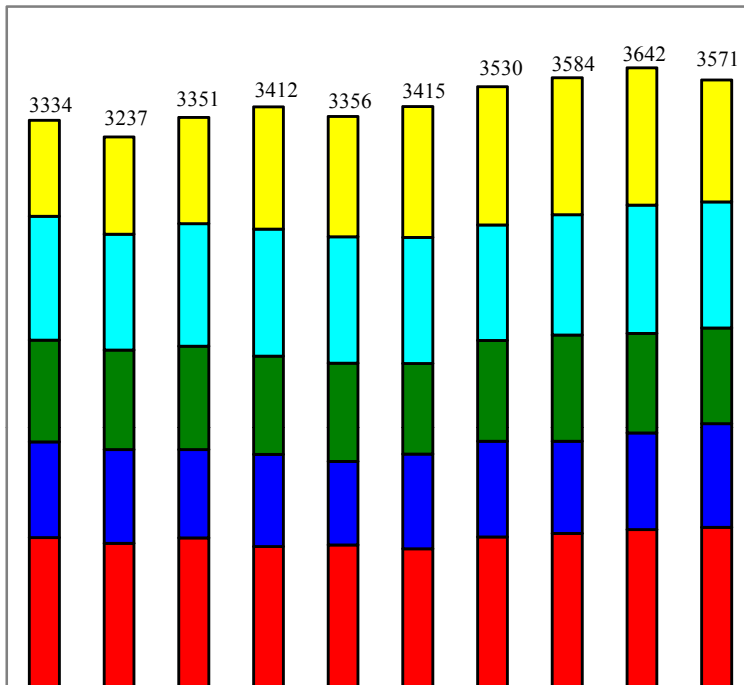
Term	H E A D C O U N T					F T E		
	Total	Undergrad	Grad	On-Campus	Off-Campus	Undergrad	Grad	Total
Fall 2001	3,334	2,772	562	3,003	331	2,610	209	2,819
Fall 2002	3,237	2,666	571	2,940	297	2,520	220	2,740
Fall 2003	3,351	2,728	623	2,941	410	2,588	261	2,849
Fall 2004	3,412	2,696	716	2,847	565	2,565	346	2,911
Fall 2005	3,356	2,652	704	2,839	517	2,505	344	2,849
Fall 2006	3,415	2,648	767	2,857	558	2,503	365	2,868
Fall 2007	3,530	2,721	809	2,898	632	2,568	397	2,965
Fall 2008	3,584	2,781	803	2,944	640	2,618	365	2,983
Fall 2009	3,642	2,837	805	3,041	601	2,673	379	3,052
Fall 2010	3,571	2,856	715	2,992	579	2,689	333	3,022

WAYNE STATE COLLEGE

Fall Enrollment Summary

Headcount

FTE

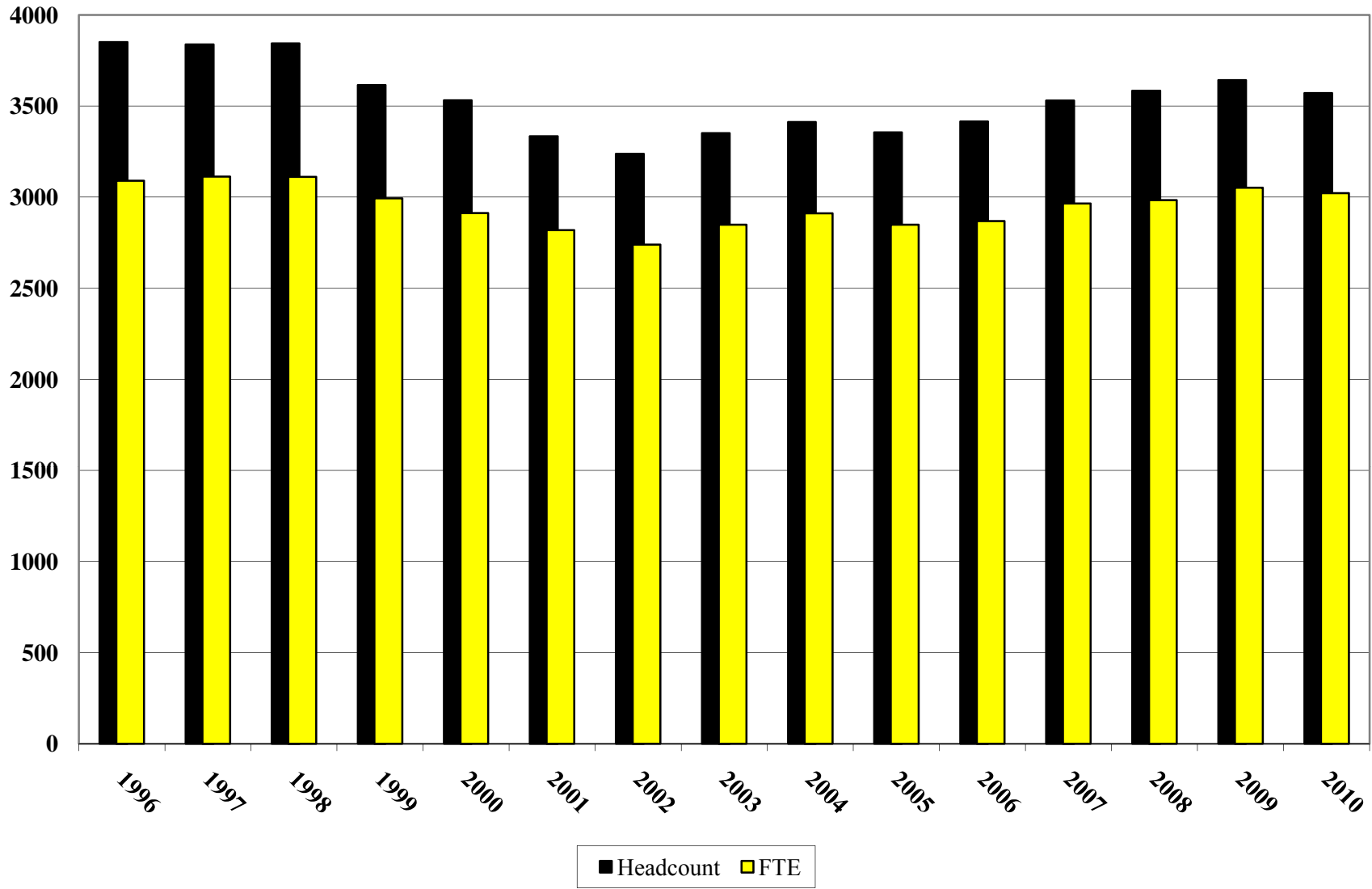


	2001	2002	2003	2004	2005	2006	2007	2008	2009	2010
Graduates	562	571	623	716	704	767	809	803	805	715
Seniors	726	679	718	744	742	740	678	706	753	739
Juniors	598	584	606	577	575	530	590	622	583	562
Sophomores	560	549	519	540	490	556	562	541	567	607
Freshmen	888	854	885	835	845	822	891	912	934	948

	2001	2002	2003	2004	2005	2006	2007	2008	2009	2010
Graduates	209	220	261	346	344	365	397	365	379	333
Seniors	668	626	665	702	686	678	616	644	687	681
Juniors	557	564	584	556	551	515	574	597	560	537
Sophomores	544	529	506	533	476	543	544	530	552	589
Freshmen	841	801	833	774	792	767	834	847	874	882

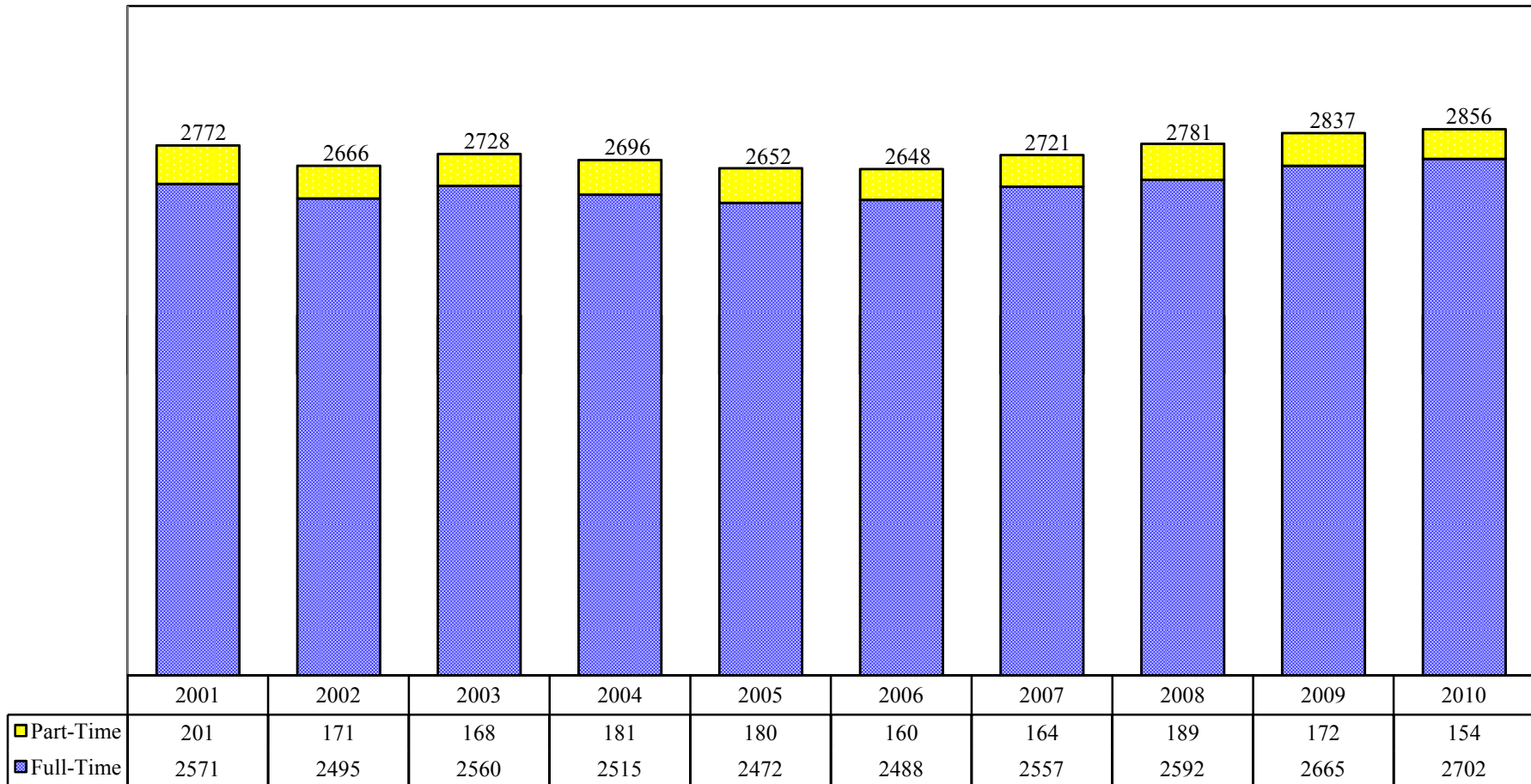
WAYNE STATE COLLEGE

1996-2010 Enrollment Growth



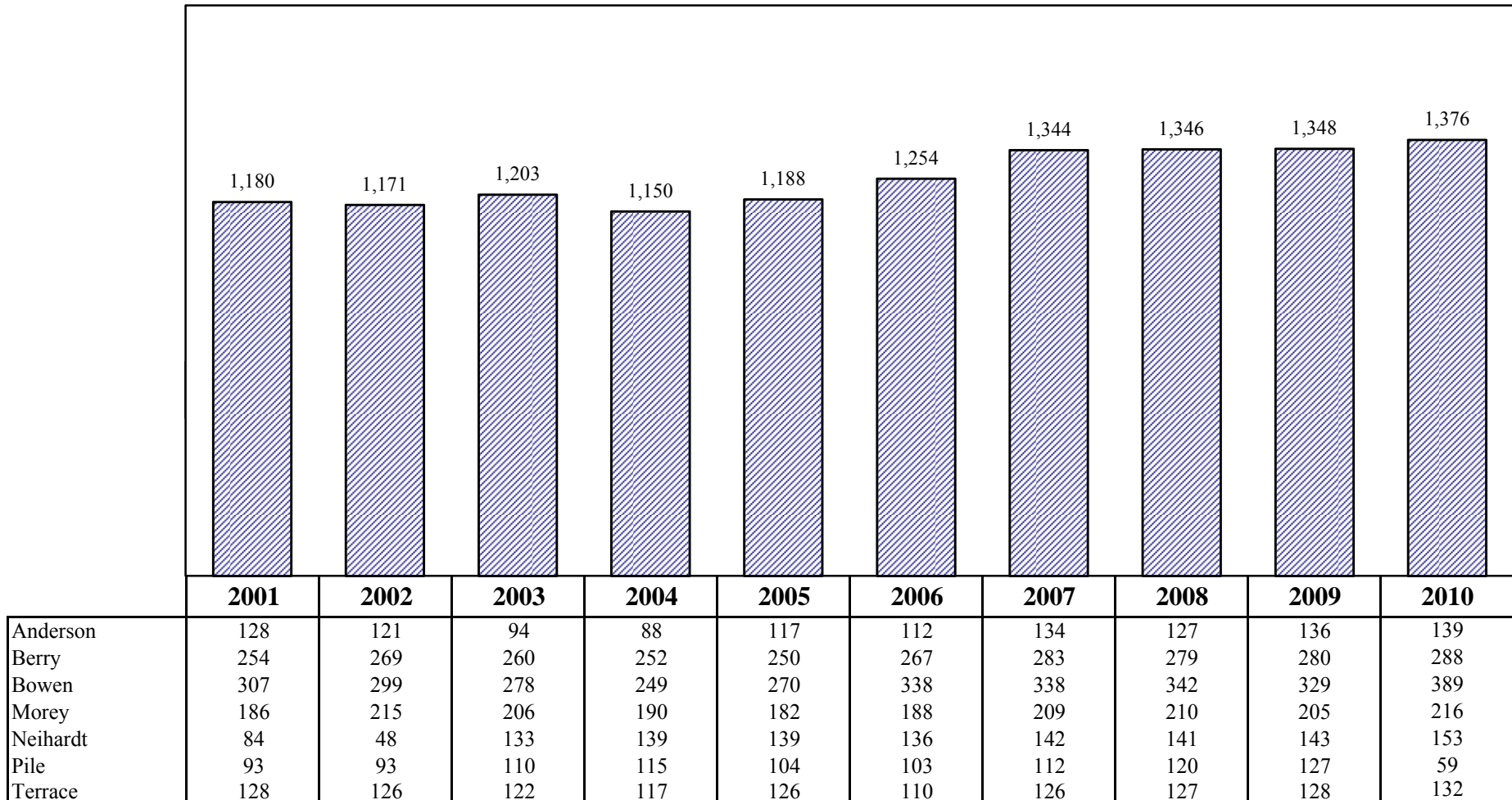
WAYNE STATE COLLEGE

Full-time and Part-time Fall Undergraduate Enrollment



WAYNE STATE COLLEGE

Dorm Occupancy



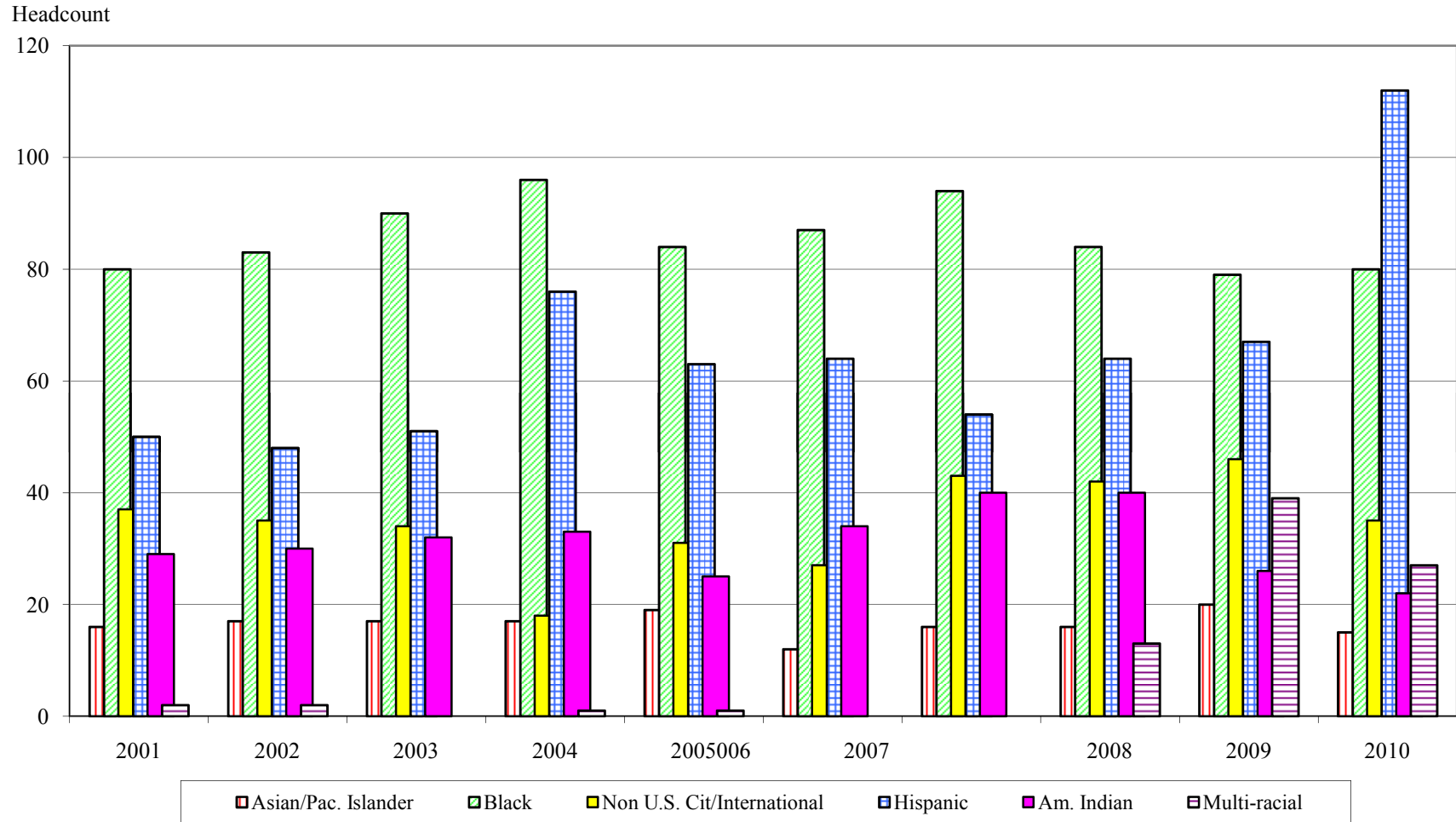
**Ethnic Background of Students
Headcount**

	Fall 2001	Fall 2002	Fall 2003	Fall 2004	Fall 2005	Fall 2006	Fall 2007*	Fall 2008*	Fall 2009*	Fall 2010*
U.S. Citizens										
Asian/Pacific Islander	16	17	17	17	19	12	16	16	20	15
Black	80	83	90	96	84	87	94	84	79	80
Hispanic	50	48	51	76	63	64	54	64	67	112
American Indian	29	30	32	33	25	34	40	40	26	22
Multi-racial	2	2	0	1	1	0	0	13	39	27
White	3,019	2,924	3,024	3,056	3,011	3,036	3,094	3,107	3,081	2,929
Unknown	101	98	103	115	122	155	189	218	284	351
Non U.S. Citizens/ International*	37	35	34	18	31	27	43	42	46	35
TOTAL	3,334	3,237	3,351	3,412	3,356	3,415	3,530	3,584	3,642	3,571
Minority % of Total	5%	6%	6%	7%	6%	6%	7%	7%	8%	8%

*Beginning with the Fall 2007 term, International students include any student reporting a foreign country of origin, regardless of citizenship status. These students are also included in the minority percentage.

WAYNE STATE COLLEGE

Minority Enrollment



Summary of Undergraduate Degrees (By School)

	Arts & Humanities	Business & Technology	Education & Counseling	Natural & Social Sciences	Total
2001-02*					
December 2001	20	55	31	44	150
May & August 2002	65	126	71	143	405
TOTAL	85	181	102	187	555
2002-03					
December 2002	28	51	19	48	146
May & August 2003	41	113	73	129	356
TOTAL	69	164	92	177	502
2003-04					
December 2003	17	63	35	39	154
May & August 2004	43	112	71	124	350
TOTAL	60	175	106	163	504
2004-05					
December 2004	27	57	41	49	174
May & August 2005	36	125	67	135	363
TOTAL	63	182	108	184	537
2005-06					
December 2005	21	44	34	49	148
May & August 2006	41	131	54	133	359
TOTAL	62	175	88	182	507
2006-07					
December 2006	23	57	49	42	171
May & August 2007	53	109	45	147	354
TOTAL	76	166	94	189	525
2007-08					
December 2007	24	50	36	50	160
May & August 2008	33	108	55	128	324
TOTAL	57	158	91	178	484
2008-09					
December 2008	23	55	37	45	160
May & August 2009	33	110	59	135	337
TOTAL	56	165	96	180	497
2009-10					
December 2009	22	61	23	49	155
May & August 2010	56	108	66	128	358
TOTAL	78	169	89	177	513
Total Since December 2001	606	1,535	866	1,617	4,624

* 2001-02 was the first academic year with the reorganization from Divisions to Schools.

**Summary of Undergraduate Degrees Awarded
December 2009 through August 2010**

	1st Major	2nd Major	Total
Applied Human & Sport Physiology	4	0	4
Art	11	0	11
Business	108	14	122
Chemistry	21	0	21
Computer Information Systems	14	2	16
Computer Science	3	1	4
Criminal Justice	28	0	28
Early Childhood	7	0	7
Early Childhood Education	10	9	19
Elementary Education	45	2	47
English	20	0	20
Exercise Science	12	1	13
Family & Consumer Sciences	14	2	16
French Education	0	1	1
Geography	4	1	5
Graphic Design	8	0	8
Health & PE	9	2	11
History	4	2	6
Human Service Counseling	25	0	25
Industrial Technology	17	3	20
Interdisciplinary Studies	0	1	1
Life Sciences	38	2	40
Mass Communication	8	1	9
Mathematics	4	0	4
Middle Level Education	3	0	3
Music	7	3	10
Natural Sciences	1	0	1
Political Science	8	1	9
Psychology	7	3	10
Social Sciences	10	0	10
Sociology	4	0	4
Spanish	6	5	11
Special Education	6	0	6
Speech Communication	18	0	18
Sport Management	23	0	23
Technology	6	0	6
Theatre	0	2	2
TOTAL	513	58	571