

September 2006

MEMORANDUM

TO: Wayne State College network users

ABOUT: Unlicensed distribution of copyrighted materials

The use of peer to peer (p2p) applications has become widespread. These applications allow users to search the network for files that may interest them, and to bring those files to their own computers. This downloading generally is not a problem. However, if one uses a p2p application to acquire copyrighted materials without buying or licensing those materials it puts users at risk personally.

Unless the user takes specific actions to disable this, most p2p programs automatically share files from the user's disk to other users worldwide,. *Sharing copyrighted materials without a license may subject the user and the College to legal sanctions.* Moreover, the traffic such sharing generates can easily cause problems for other users at the College. Both of these outcomes violate Wayne State College's Responsible Use of the Campus Network policy.

Federal law requires the College to take action when notified that someone on its network is distributing copyrighted materials. The College will not protect individuals who distribute copyrighted material without an appropriate license. Since most p2p programs install themselves with worldwide sharing turned on by default, it is very easy for their users to find themselves in serious trouble with the College and with copyright holders.

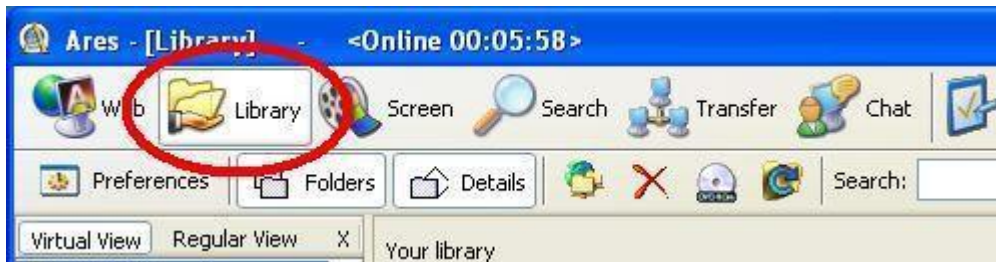
If you are using p2p applications and are connected to the WSC network, you should consider removing the p2p applications from your system. If you choose not to remove these applications, you should IMMEDIATELY ensure that your system is set to prevent them from acting as providers of unlicensed materials to other users (see instructions at <http://security.uchicago.edu>).

Failure to restrict p2p applications appropriately, whether you are aware of the violation or not, will result in your machine being removed from the network until the copyright violation is rectified. It will also cause a report to be sent to the Dean of Students. This will lead to disciplinary action within the College. Additionally, legal action may be taken against you by the holder of the copyright for the material that was found on your system.

WSC Residence Life
Student Center 201
402-375-7318

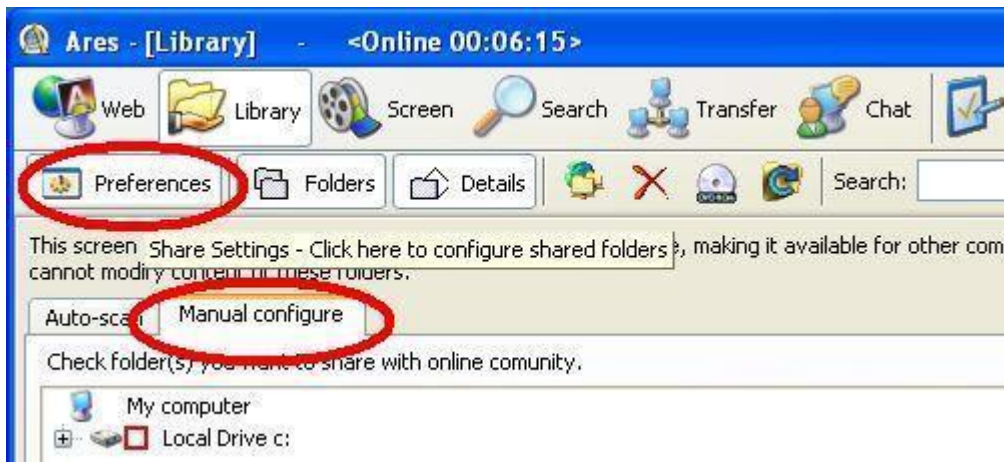
Disabling File Sharing in Ares

Click the **Library** button in the main window.



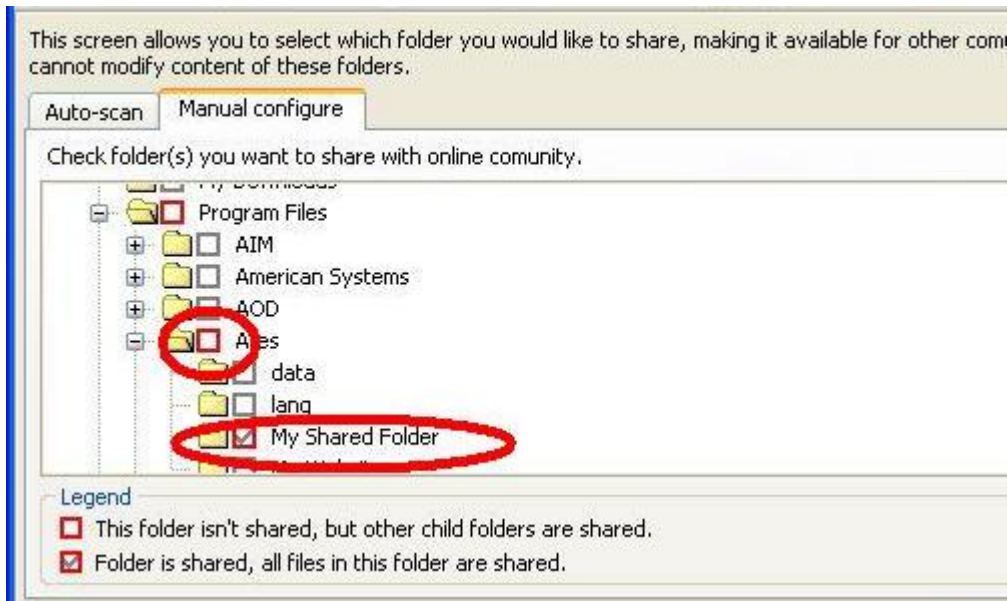
Library

Click the **Preferences** button and select the **Manual configure** tab.



Configure

Look for drives or folders with a red box next to their name. These drives have shared subfolders. Expand the drive tree by clicking the + buttons next to their names until you find all of the folders with a selected check box next to them. Uncheck all of the boxes.



Shares

When there are no shared folders remaining, all of the drives should have empty gray check boxes next to them.

