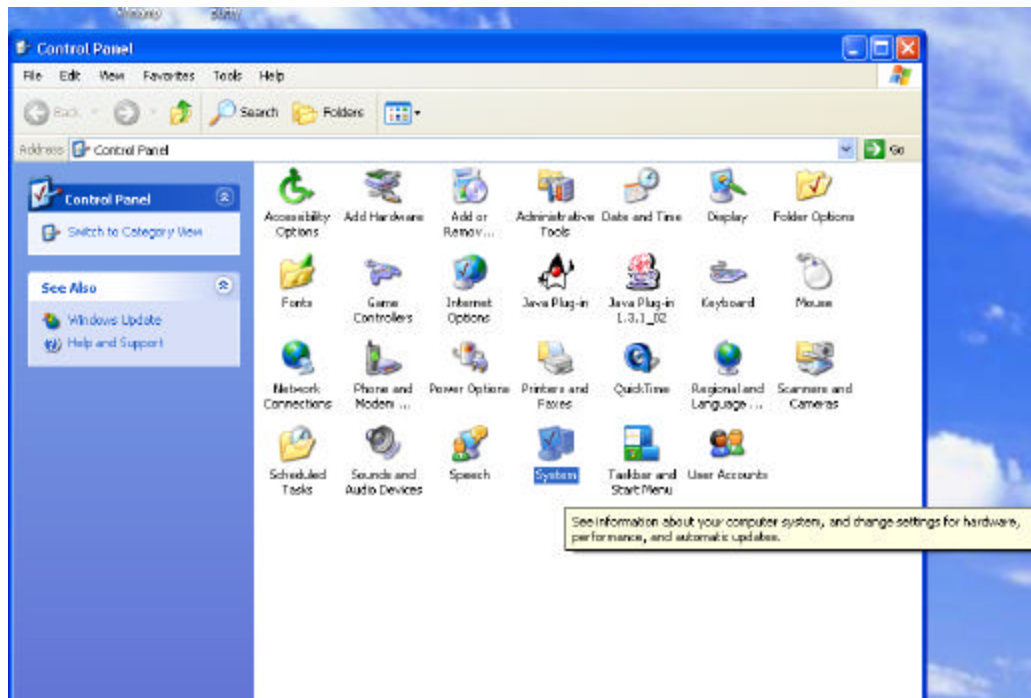
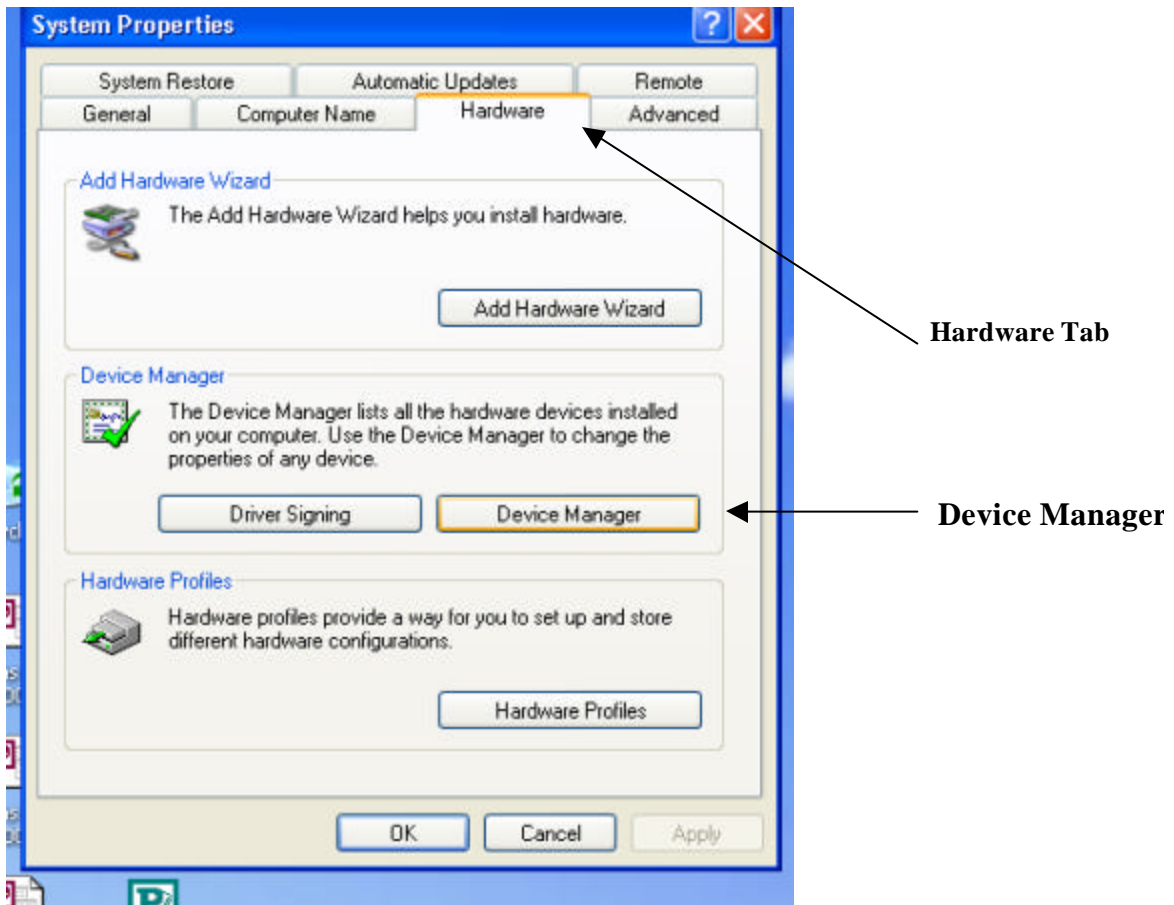


How To Check If You Have An Ethernet Card Windows XP

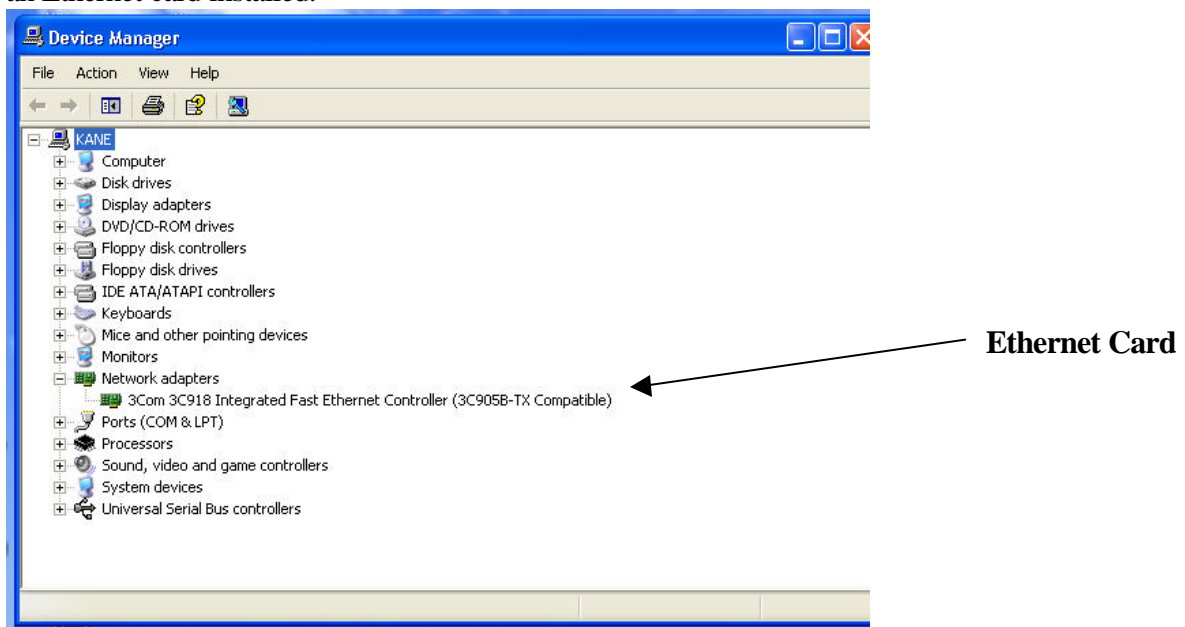
1. In order to check if you have an Ethernet card, go to the **Control Panel** and then double-click the **System** window.



2. This will bring up the **System Properties** window. Once here, click the **Hardware** tab, and then click on the **Device Manager** button.



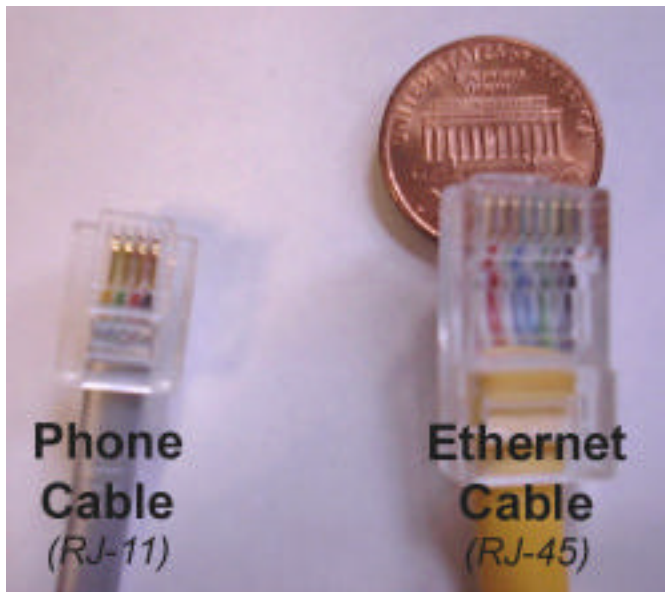
3. In the **Device Manager**, click the little button next to **Network Adapters**. If your Ethernet card is listed there, it is installed. If there is no card listed, then you do not have an Ethernet card installed.



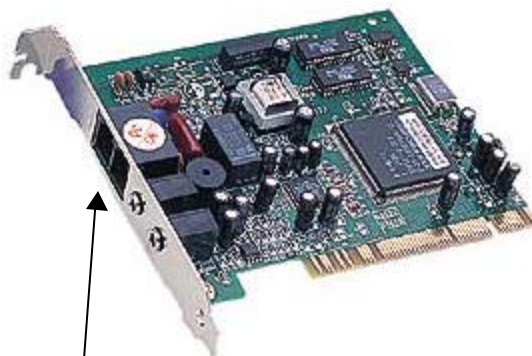
4. You can also physically look to see if you have an Ethernet card. Many people confuse an Ethernet card for a modem, here is how you can tell the difference.

***Note – An Ethernet Card is NOT a modem. They look very similar, but they are not the same thing.**

An Ethernet Card takes a cable that looks like a phone cord, but if you look closely you will notice that the cord for the Ethernet card has a slightly larger end on it. Similarly, the plug (jack) on the card itself looks like a modem jack, but it is slightly larger.



Ethernet Card – usually has only one jack.



Modem – Usually has two jacks on it.