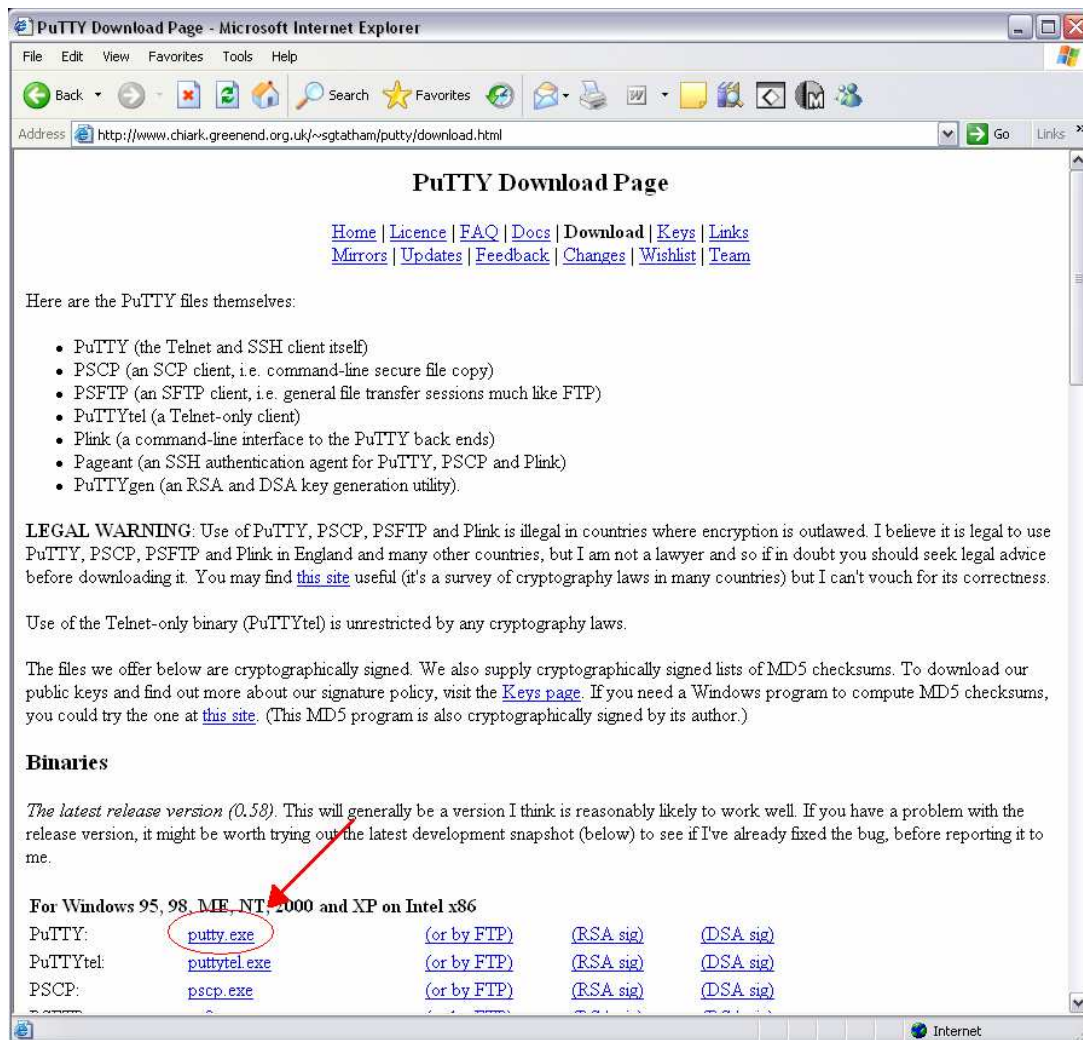


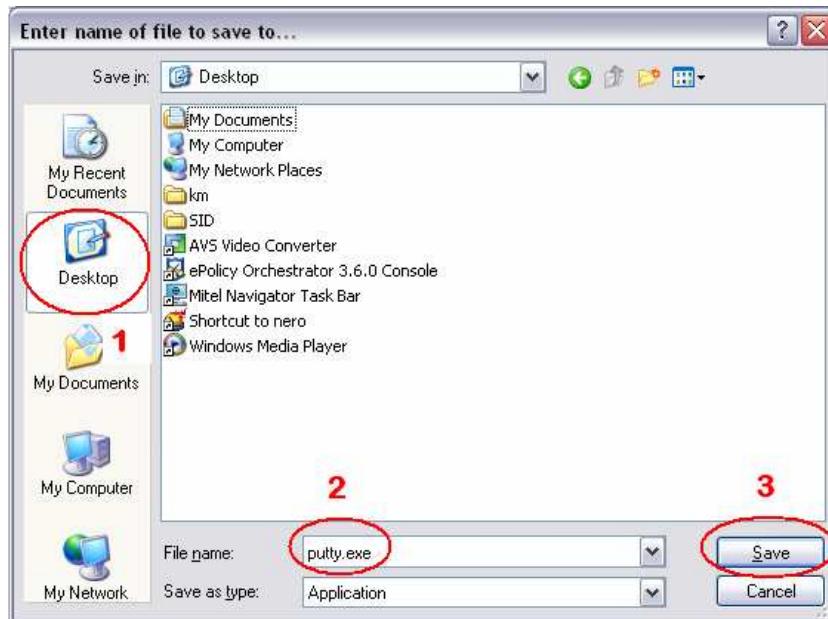
Establish a Secure Connection to Willy (willy.wsc.edu)

- 1) First download a tool called “PuTTY” in order to securely connect to Willy. This can be done by going to the following web page: <http://ecampus.wsc.edu/software/putty> (this will re-direct you to the main PuTTY download page)
- 2) Left-click the putty.exe link (for you’re operating system) and from the menu select “Save Link As...”



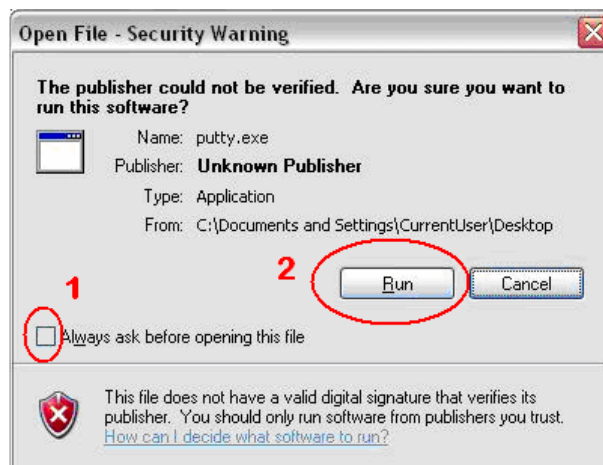
3) You will want to save this program to your desktop when prompted. You can do this by 1) selecting the “desktop” option on the left, 2) ensuring the file name is “putty.exe”, and 3) clicking on the save button.

*** Be sure to close the download window when complete.



4) You are now ok to run a putty session and continue through the rest of instructions for establishing a secure connection to Willy

** When prompted with the following message Uncheck the “Always ask before opening this file” box, then click “run”

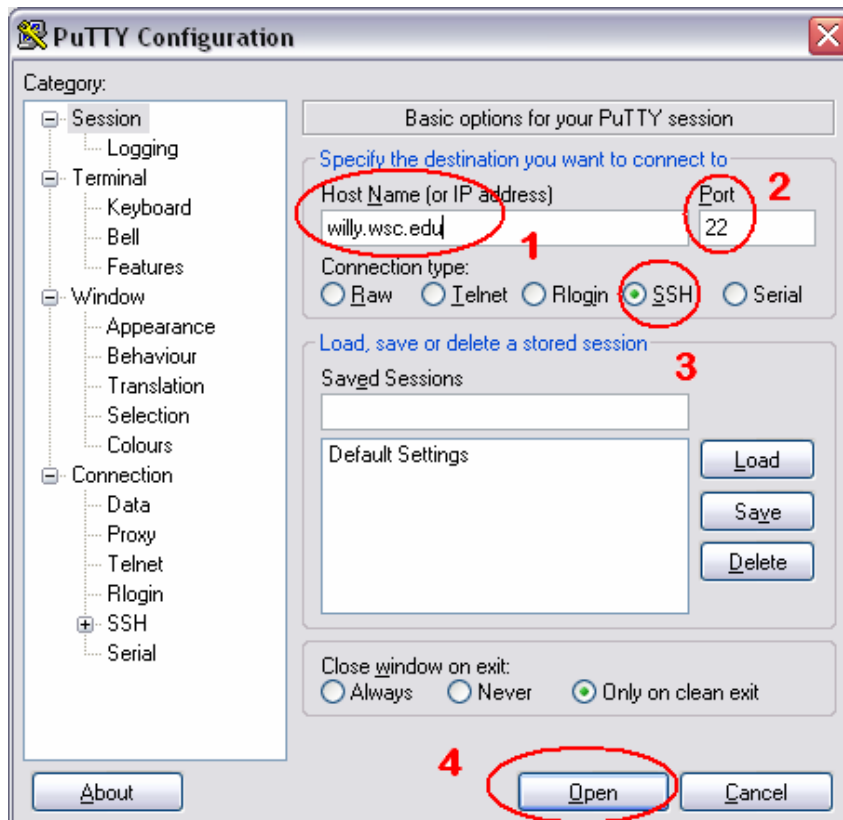


5) Open putty by double clicking the putty.exe icon on the desktop and this will open a new window.



6) In the PuTTY Configuration window:

- a) enter “willy.wsc.edu” in the Host Name box
- b) ensure the Port is set to 22
- c) ensure the option for SSH is selected
- d) click open



7) You will then be prompted with a “PuTTY Security Alert” message to which you must select “Yes”.



8) At this point a new window will open and your secure connection to Willy has been established.