

## WSC 2009-2010 CAAP Results

The **Collegiate Assessment of Academic Proficiency (CAAP)** is the standardized, nationally normed assessment program from ACT that enables postsecondary institutions to **assess**, **evaluate**, and **enhance** student learning outcomes and general education program outcomes.

Average Mean CAAP Scores (Fall 2009 and Spring 2010)			
<b>Critical Thinking</b>			
	Freshmen Scores Fall 2009	Senior Scores Spring 2010	National Mean Score
CAAP score range: 40 to 80	60.2	63	62.0
Percent at or above the National Norm	40%	58%	
ACT Composite Mean Score (for cohort tested)	21.6	21.8	21.1 (National) 22.1 (NE) (2008 H.S. Graduates)
<b>Writing Essay</b>			
	Freshmen Scores Fall 2009	Senior Scores Spring 2010	National Mean Score
CAAP score range: 1 to 6	3.02	3.29	3.2
Percent at or above the National Norm	36.5%	47%	
ACT Composite Mean Score (for cohort tested)	20.5	21.9	21.1 (National) 22.1 (NE) (2008 H.S. Graduates)

CAAP Score Range – Critical Thinking: 40-60; Essay Writing: 1 to 6

### Student Learning Gains

#### Critical Thinking

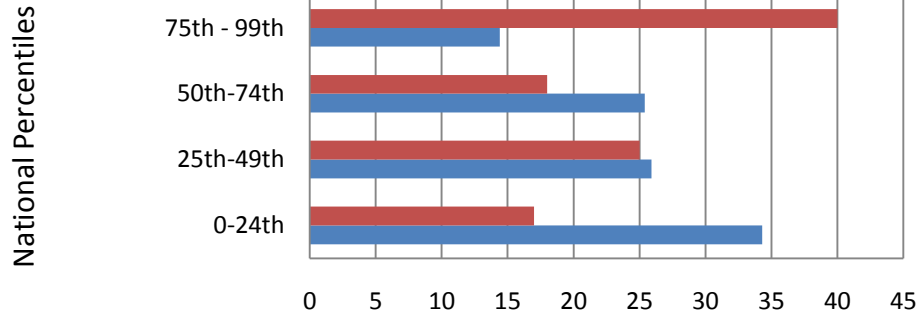
The increase in learning on the performance tasks is **the same as** what would be expected at an institution with students of similar academic abilities.

#### Writing Essay

The increase in learning on the performance task is **the same as** what would be expected at an institution with students of similar academic abilities.

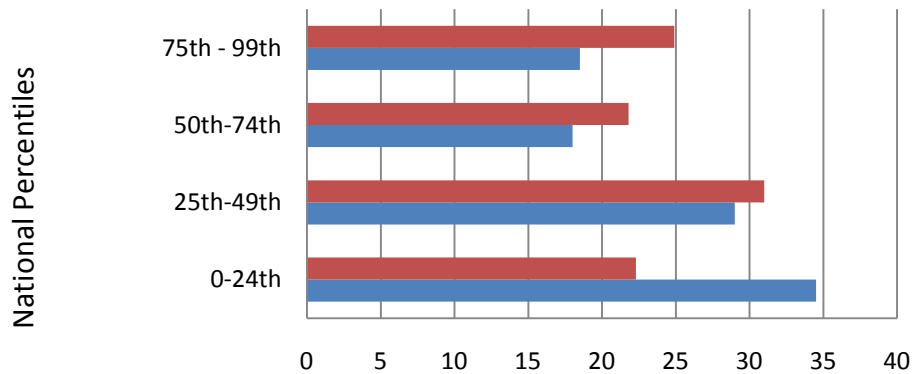
## WSC CAAP SCORES COMPARED TO NATIONAL PERCENTILES

### CAAP Scores--Critical Thinking



	0-24th	25th-49th	50th-74th	75th - 99th
■ Average Number of Seniors in Each Percentile	17	25	18	40
■ Average Number of Freshmen in Each Percentile	34.3	25.9	25.4	14.4

### CAAP Scores--Essay Writing



	0-24th	25th-49th	50th-74th	75th - 99th
■ Average Number of Seniors in Each Percentile	22.3	31	21.8	24.9
■ Average Number of Freshmen in Each Percentile	34.5	29	18	18.5