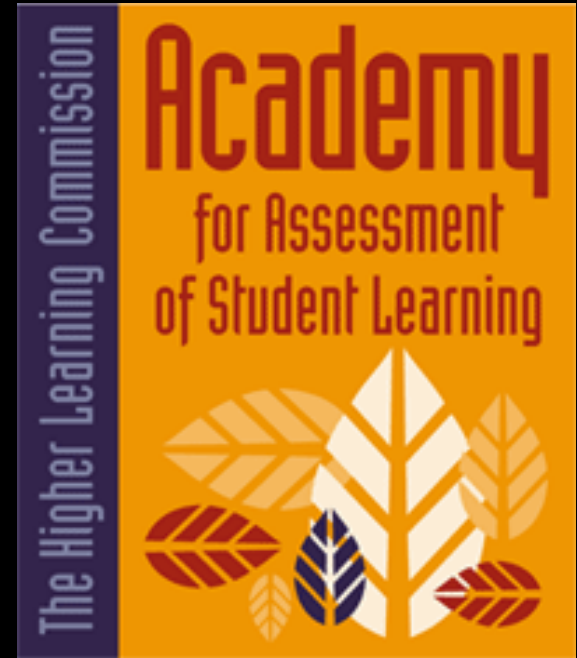


Academy for Assessment of Student Learning



Ms. Sue Sydow, Assessment Director

Dr. Patricia Arneson, School of Business

October 28, 2008

IACBE Region 5 Annual Meeting

Wayne State College

Assessment at WSC...

- *Assessment Web site:*
- www.wsc.edu/assessment

Academy Team

Represents 4 schools, general education committee, EDU accreditation, a Dean

Why we joined HLC Assessment Academy...

- *AQIP 2007 Quality Check-up Visit*
 - WSC in beginning level on the continuum of assessment program implementation
 - Needed to expedite assessment on campus
 - Establish a campus-wide “*Culture of Assessment*”

Connections to Accreditation...

- May serve in place of mandated progress reports, monitoring reports, and focused visits on assessment of student learning (PEAQ)
- May serve in place of one or more action projects (AQIP)
- Is intended to produce evidence for Criteria and Core Components for accreditation evaluation



Demand for access



Public accountability & higher education

Changing contexts, few boundaries

***Reauthorization
of Higher Education***

***International
pressure...
professional
mobility***

What is the Academy for Assessment of Student Learning?

- An experience intended to develop institutional culture and increase institutional commitment to assessing and improving student learning.
- Participation in the Academy is designed to generate evidence for accreditation evaluations and assessment related follow-up.

The Academy is a series of events and interactions targeted at...

- Understanding,
- Confirming, and
- Improving **Student Learning**.



The Academy is...

- **Four-year** institutional commitment
- Sequence of events and interactions focused on **student learning**



The Academy is...

- Targeted at **accelerating** and **advancing efforts** to assess and improve student learning



The Academy is...

- Designed to **build institution-wide commitment** to assessment of student learning



1. Information and Pre-Planning Workshop (January)

- **Identify Institutional Assessment Needs**
- **Action Plan**
 - Planning the Scope and Sequence of Participation
 - Desired Results and Impact
 - Determine Resources and People needed
 - Integrating the Work and Finding Leverage
- **Prepare for Roundtable Event**
 - Designate Team Leader and Attendees
 - Discuss Pre-work
 - Scope & Detail of Action Portfolios and Student Learning Projects
 - Storyboarding Process

Training Facility--Marriott Hickory Ridge, Lisle, Illinois

- Food, food, and more food--all included!
- Business center
- Wireless & Internet room
- Fitness center, outdoor
walk/exercise course, pool
- Space



2. *Academy Roundtable (February)*

- **Action Portfolios**
 - Student Learning Project(s) – Storyboard Process
 - Communication Plan
 - Formative Evaluation Plan
 - Support Network & Resource Plan
- **Academy Mentors**
 - Team Leader



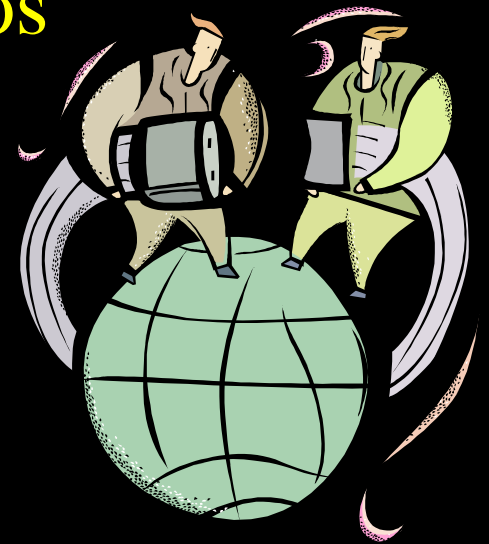
WAYNE STATE COLLEGE
GENERAL EDUCATION ASSESSMENT!
A NEW PERSPECTIVE!
A NEW GEN ED PROGRAM
ATTITUDE OF ASSESSMENT
E-PS 300
EVALUATED PERSPECTIVE
FIRST YEAR

The Higher Learning Commission
Member Institution
Wayne State University
Member Institution
Wayne State University
Member Institution
Wayne State University

**WSC Academy Team
Academy Roundtable February 2008**

3. *Academy Network*

- **Electronic Gathering Place**
 - Dialogue on Learning and Assessment
- **Post Student Learning Portfolios**
 - Action Portfolio Updates
- **Provide & Receive Feedback**
 - Academy Mentors
 - Other Academy Institutions
- **Phone Conferences**



Academy Benefits and Services

- **Phone Conferences**
 - Hot Topic Conversations Led by Institutions
 - Hot Topic Conversations Led by Experts
 - Phone Consultations
- **On-Campus Visits**
 - Assessment Inventory
 - Campus Conversations
 - Project Storyboarding

4. *Learning Exchange and Showcase (Mini-conference)...*

- HLC Annual Meeting (Chicago)
 - Learning Exchange
 - Plenary Presentation
 - Roundtable Discussions
 - Interactive Hot Topic Discussions
 - Poster Fair
 - Mentor Project Feedback
 - Annual Meeting Roundtable Discussions





BUILDING A CULTURE OF ASSESSMENT

Wayne State College

Wayne State College Mission: Wayne State College is a comprehensive institution of higher education dedicated to freedom of inquiry, excellence in teaching and learning, and regional service and development.

Need.

Wayne State College underwent its second AQIP Quality Checkup Visit in May 2007. In the team's judgment, the institution presented satisfactory evidence that it met the goals of the Quality Checkup. However, the Feedback Report noted that WSC was in the beginning level on the continuum of assessment program implementation.

Academic Quality Improvement Program (AQIP)

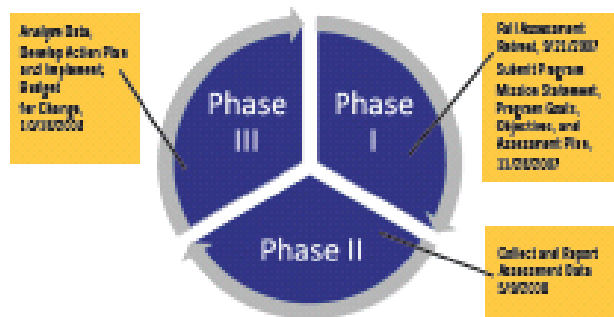
Plan of Action.

In July 2007, the College added the professional staff position of assessment director to coordinate a systematic method of assessment activities across the institution. In addition, a substantial budget was appropriated for the assessment office to assist in assessment projects and initiatives. The following responsibilities were developed for the assessment director.

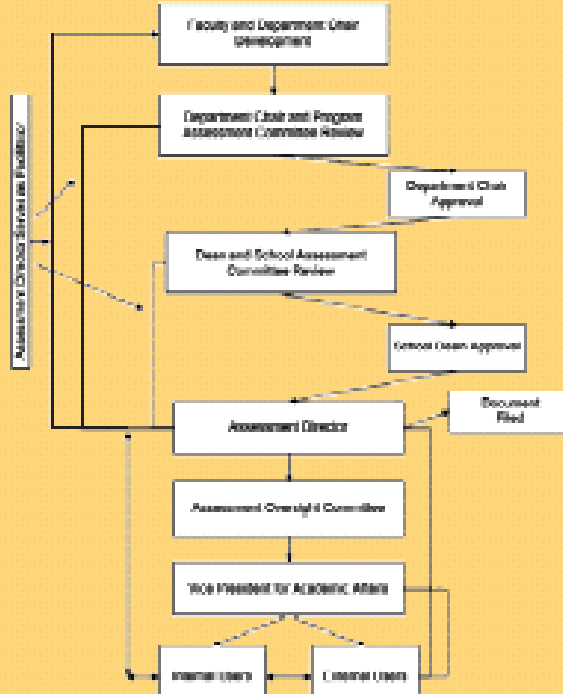
- Work with academic school deans, department chairs and faculty in developing, maintaining, and conducting effective assessment activities.
- Provide assistance to academic and administrative departments in conducting assessment activities.
- Design and develop an assessment handbook for annual assessment plans and reports.
- Review and give feedback, as appropriate, on assessment plans and annual assessment program reports.
- Serve as chair of the Assessment Oversight Committee.
- Plan and conduct workshops and other faculty development programs to assist faculty in conducting effective and meaningful assessment activities.
- Assist in the AQIP evaluation process.

Timeline.

A timeline was developed by the assessment director, deans and vice president for academic affairs. This timeline was presented to the department chairs and faculty to use as a guideline in developing an institutional, systematic method of assessment. Phase I was completed by all departments by the due date of November 28, 2007. Phase I was facilitated by an all-campus assessment retreat.



WSC Assessment Data Flow



Process.

The chart above illustrates the flow of assessment data through the institution. Each school is responsible for establishing assessment goals and objectives at the school level. Primary assessment is the responsibility of the delivering department. Each department:

- Develops program and course goals
- Develops specific objectives/outcomes
- Selects measurement tools—at least one direct and one indirect
- Collects and reports assessment data
- Analyzes data collected and reports results
- Implements change through action plans

Institutional Support.

The institutional Strategic Planning Committee met on November 1, 2007, and indicated a strong need to create an AQIP Action Project for assessment, reinforcing the continuing need for assessment that was first identified at a 1095 Strategic Planning Retreat.

Administrative Support.

During the Faculty/Professional Staff 2007 Opening Meeting, Wayne State College's president and vice president for academic affairs both spoke on the importance of creating a culture of assessment. At their Fall Chair Retreat, department chairs received training for their roles in the campus assessment retreat.

All-Campus Assessment Retreat.

All classes were suspended on September 21, 2007, for the first all-campus assessment retreat. Each school held departmental meetings that allowed time for collaboration on assessment between the department chairs and department faculty. A similar retreat is planned for the Spring semester on April 28, 2008.

Professional Development.

The assessment director and selected faculty members attended the 2007 Assessment Institute in Indianapolis, Indiana, sponsored by IUPUI.

Academy for Assessment of Student Learning.

WSC was accepted to the Higher Learning Commission's Academy for Assessment of Student Learning on September 19, 2007. The Academy...

- Facilitates implementation of an AQIP Action Project
- Focuses on general education program assessment
- Fulfills the institutional accreditation need to create an institutional systematic method of assessment
- Includes representation by the assessment director, a dean, a professional staff member, and four faculty members who attended the following:
 - Academy Information and Planning Workshop, January 2008
 - Academy Roundtable, February 2008
 - Academy Showcase at HLC Annual Meeting, April 2008

Academy for Assessment of Student Learning
The Higher Learning Commission

Closing the Loop.

Building a culture of assessment will take time and the continued commitment of the entire institution. The systematic method of assessment being implemented will document assessment results and provide evidence that the results are used for continuous improvement of programs and services to cultivate a culture of assessment.

Wayne State College

www.wsc.edu

Contact:

Sue Sylow, Director of Assessment
Wayne State College • 1111 Main Street
Wayne, NE 68787 • assessment@wsc.edu
1-800-228-9972

5. *Academy Results Forum*

- “Graduate” from the Academy
 - Impact Report – Results & Evaluation
 - Focus on the data & the use of the data
- Cohort Publication
 - Compendium of Case Studies & Good Practices
 - Focus on making improvements based on data
- Sustainability Plan
 - Continue to Assess & Improve Student Learning

Academy Results--What do you want to be able to say...

...about students & their learning/development in four years?

...about your institution's commitment to, culture for, & engagement in student learning & assessing to improve that learning?

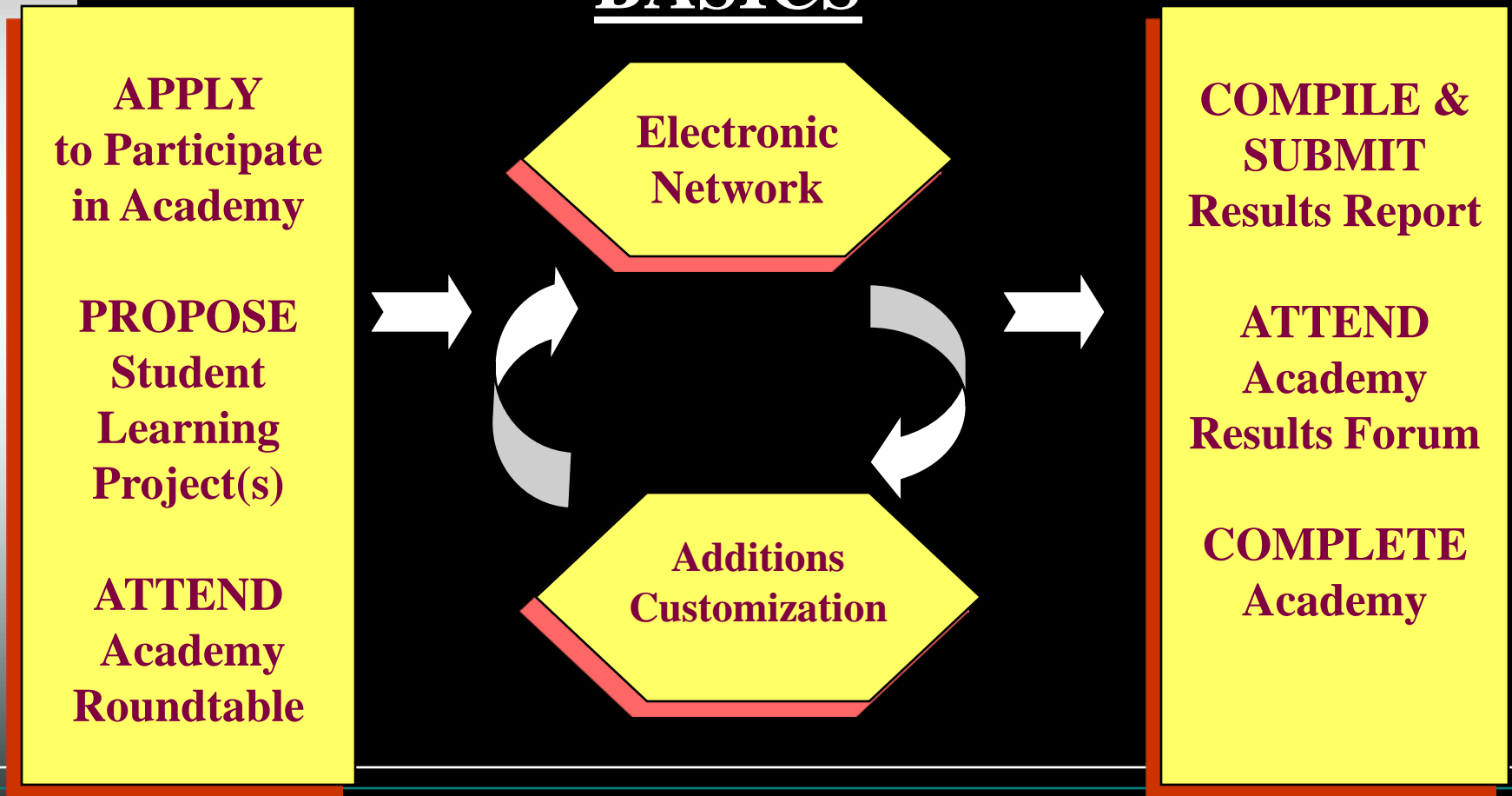
...about what you've accomplished through the Academy?

Academy Goals and Outcomes...

- **Sharable Products and Learning with Other Institutions** (i.e., publications, good practices, scholarship/research)
- **Evidence of a Sustained Commitment** to and Sustainable Processes for Assessing, Confirming, and Improving Student Learning

ACADEMY FOR ASSESSMENT OF STUDENT LEARNING

BASICS



YEAR ONE...

- Academy Roundtable (multi-day event; five-person team included in pricing, additional team members may be added at additional costs)
- **Learning Exchange and Showcase at HLC Annual Meeting**
- Academy's Electronic Network with mentor and consulting services
- **Optional: Other events, programs, and customizations (additional fee)**

YEAR TWO...

- Bi-annual Progress Analyses (Peer & Mentor Feedback and Consultation on Student Learning Projects)
- Learning Exchange and Showcase at HLC Annual Meeting
- Academy's Electronic Network with mentor and consulting services
- Optional: Other events, programs, and customizations (additional fee)

YEAR THREE...

- Bi-annual Progress Analyses (Peer & Mentor Feedback and Consultation on Student Learning Projects)
- Learning Exchange and Showcase at HLC Annual Meeting
- Academy's Electronic Network with mentor and consulting services
- Optional: Other events, programs, and customizations (additional fee)

YEAR FOUR...

- Results Forum (two-day event; five-person team included in pricing, additional team members may be added for additional cost)
- **Results Report & Sustainability Plan (includes publications and certificates of accomplishment)**
- Learning Exchange and Showcase at HLC Annual Meeting
- **Academy's Electronic Network with mentor and consulting services**
- Optional: Other events, programs, and customizations (additional fee)

Academy Features...

- Analysis, critique, and feedback on project design, progress, and other components of Action Portfolios



Academy Features...

- **Web-based library of Action Portfolios**
(expected outcomes, assessment strategies and models, instruments, and results),
progress analyses, and mentor and peer feedback

[Academy Member Web site](#)

Academy Features...

- Access and reduced pricing to services for assessing and improving student learning

Annual Meeting
Workshops



Academy Features...

- Receive consultation from mentors
- Receive & provide feedback
- Share good practice
- Network



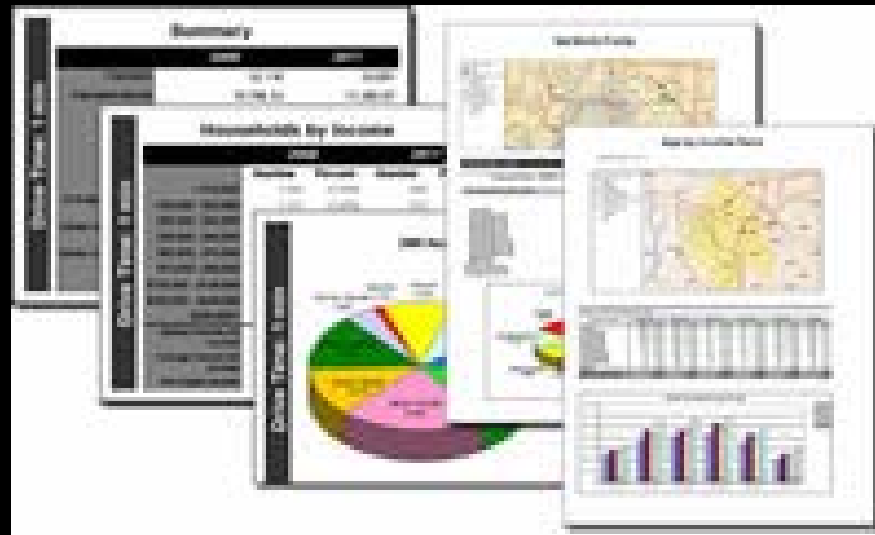
Academy Benefits...

- Opportunity to compile, share, and compare good practices (including learning outcomes, assessment models, instruments, and results) for assessing and improving student learning



Academy Benefits...

- Documented evidence for accreditation evaluations and follow-up monitoring



Academy Benefits...

- Replace Higher Learning Commission-mandated follow-up on assessment for accreditation



Academy Benefits...

- Collaborative relationship with the Higher Learning Commission in building institutional commitments to improving student learning



Action Portfolio defined...

- Complete plan, implementation process, and intended results and outcomes of the Academy.



Examples of Academy Action Portfolio Topics

- Systemic, Comprehensive Processes
- General Education/Core Curricula
- Program/Departmental Review
- Communicating Evidence/ Improving Transparency
- Using Assessment data
- Shared Responsibility
- Measures, Tools, and Performance Criteria
- Resources & Professional Development

Student Learning Projects defined...

- Multi-faceted projects focused on assessing and documenting student learning.

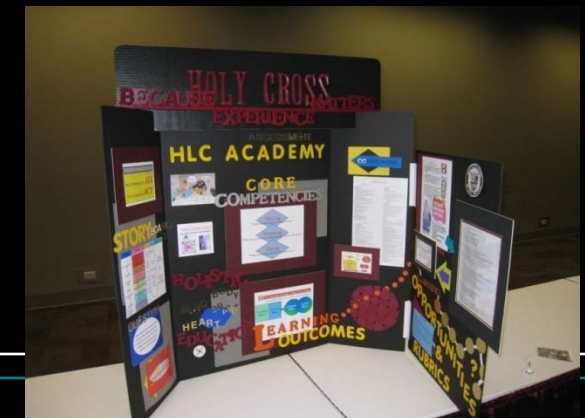
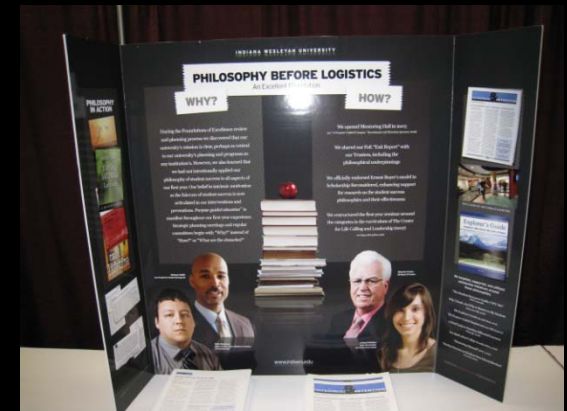


HLC Academy Mentors...

- Assessment experts who are trained to facilitate group thinking and are experienced in assessing student learning at the course, program, and institutional level.
- WSC's mentors from HLC Academy:
 - **Kelly Funk**, Michigan State University
 - **Jennifer Fager**, Saginaw Valley State University
 - **Susan Hatfield**, Winona State University
 - **HLC Staff**

Academy Cohorts...

- Three cohorts of 16 institutions accepted each year:
- 2006-2007 (3 cohorts)
- 2007-2008 (3 cohorts)
- 2008-2009 (2 cohorts)



References...

- <http://www.ncahlc.org/>
 - Higher Learning Commission
 - Assessment Academy Link

Questions?



Thank you!

